



Down Syndrome Connection

OF NORTHWEST ARKANSAS

TABLE OF CONTENTS

About DSCNWA	2
Programs	3-4
Events	5
Step Up for Down Syndrome Walk	6
Navigating the State of Arkansas' benefits and resources	7
Employment Services and Programs for adults with Down syndrome	8-10
Recreational Activities available for individuals with Down syndrome in NWA	10-15
Social Media Groups in NWA	16
National Organizations	16
Supplies	17

Welcome to Northwest Arkansas!

The Down Syndrome Connection of NWA is here to support you as you get established in your new community. DSCNWA is a nonprofit serving individuals with Down syndrome, their families and their support teams. Our mission is to facilitate inclusion and respect for individuals with Down syndrome within the Northwest Arkansas Community, ensuring that they have access to the support and the resources necessary to reach their full potential at all stages of life.

We are excited to welcome you to our DSCNWA family! There are so many ways for you to be involved in our organization and the community. DSCNWA offers several fun social events for our members throughout the year, as well as, age specific programming for individuals with Down syndrome that meet monthly. DSCNWA also offers continued educational support throughout the year.

Every year in October we hold our Step Up for Down Syndrome Walk, which is a wonderful celebration of our members and our biggest fundraiser of the year that helps make all that we do possible.

In this packet we have included the information you need to get plugged in to DSCNWA, as well as, the NWA community which has so much to offer. Welcome to our special spot in the world. We look forward to meeting you and helping you settle in.

Sincerely,

DSCNWA

Local Organizations and Therapy Providers	18
--	----

About DSCNWA



**Down Syndrome
Connection**
OF NORTHWEST ARKANSAS

What started as a group of parents supporting each other has turned into a professional, working organization of parents, friends, business leaders, volunteers, educators, therapists and others, working to provide a connection in our community. We hope you will join us in our continued growth.

Our Mission

Our mission is to facilitate inclusion and respect for individuals with Down syndrome within the Northwest Arkansas Community, ensuring that they have access to the support and the resources necessary to reach their full potential at all stages of life.

Our Vision

Our vision is a Northwest Arkansas Community in which individuals with Down syndrome are able to participate in a meaningful way at work and at play, are able to achieve their aspirations, and are welcomed as valued community members.



Our Outreach

PROGRAMS FOR INDIVIDUALS WITH DOWN SYNDROME OF ALL AGES MONTHLY

SPECIAL EVENTS FOR THE WHOLE FAMILY THROUGHOUT THE YEAR

SOCIAL GATHERINGS FOR MOMS, DADS AND KIDS

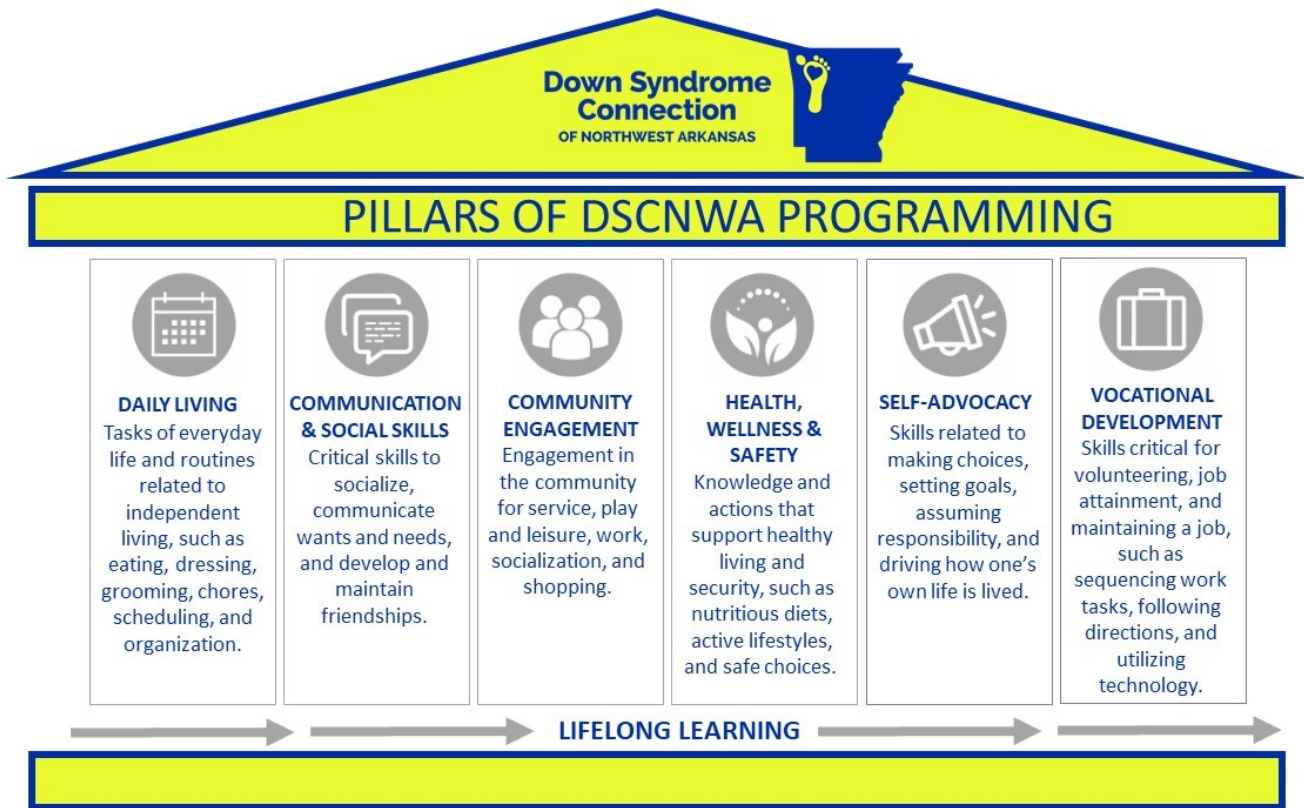
EDUCATIONAL SEMINARS THROUGH OUT THE YEAR AND LENDING LIBRARY

COMMUNITY EDUCATION FOR OUR EDUCATORS, THERAPY PROVIDERS AND MEDICAL PROFESSIONALS

NEW PARENT SUPPORT, NEW PARENT BASKETS AND NEW PARENT MAGAZINE

Programs

We offer age specific programming that is both fun and educational incorporating our pillars of programming to support life long learning.



Program Groups

New Parent Tribe:

for parents of children with Down syndrome ages 0-3

Play PALS:

for kids with Down syndrome ages 4-Kindergarten

PALS: Peers Actively Learning Together

for kids with Down syndrome ages 1st-5th grades

STARS: Special Teens Achieving Real Success

for teens with Down syndrome ages 6th-12th grades

Club 3-21:

for adults age 18+ with Down syndrome



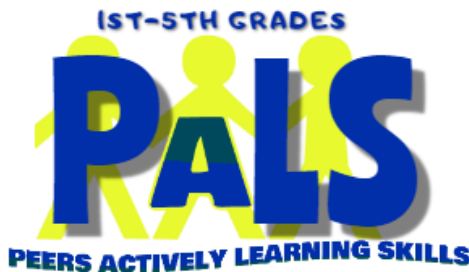
Programs Groups



The New Parent Tribe program is designed specifically for parents with kids ages 0-3 with Down syndrome. Allowing parents of younger kids to make new friends, discuss concerns, share joys and develop new supports. The format of the New Parent Tribe is social time with light refreshments followed by group led discussions with some of our more tenured parents. Childcare is provided.



The Play PALS group is specifically designed for kids ages 4 through kindergarten with Down syndrome. Offering opportunities for kids to make new friends, work on social skills, verbal skills, fine motor skills and of course have fun! Parents requested to stay on site for the program but to allow their Play PAL to participate independently in the planned program.



The PALS group is specifically designed for kids in the 1st grade through the 5th grade with Down syndrome. Offering opportunities for kids to make new friends, work on social skills, verbal skills, motor skills, independence and of course have fun! Parents requested to stay on site for the program but to allow their PAL to participate independently in the planned program.



The STARS group provides a fun and safe environment for teens in the 6th-12th grades with Down syndrome to learn life skills. Focusing on our Pillars of Programming teens will have opportunities to make new friends, volunteer in their communities, explore employment skills, increase self-confidence and practice valuable life skills to foster independence. Parents may be requested to stay on site for the program but to allow their STAR to participate independently in the planned program.



The Club 3-21 group provides programs for adults ages 18+ with Down syndrome to have fun and learn and practice life skills. Focusing on our Pillars of Programming adults will have opportunities to make new friends, volunteer in their communities, explore employment skills, increase self-confidence and self-advocacy and practice valuable life skills to foster independence.

Annual Social Events for All Members

to~gather

Easter Egg Hunt



Summer Ice Cream Social



Christmas Brunch

Tribe Life Scheduled Monthly

- Mom's Night Out
- Dad's Night Out
- Tribe Play Dates

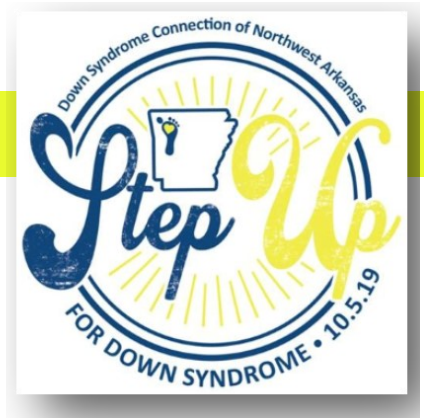
Educational Offerings Throughout The Year

Including but not limited to:

- Peer Presentations: to help peers understand Down syndrome.
- IEP Seminar: to help navigate your child's IEP
- Conference: not offered yearly

Annual Step Up for Down Syndrome Walk

Our Annual Step Up for Down Syndrome Walk is our primary fundraiser that enables us to continue to offer support, programs and education to our members and our community.



The walk is a wonderful celebration of individuals with Down syndrome, their families, friends and support teams. The walk is held at the Arvest Ballpark Springdale, AR in October. Participants are encouraged to create walk teams. Teams are rewarded and recognized for meeting fundraising thresholds.

This special event has lots of fun things for everyone! Food, games, a silent auction, entertainment, inflatables, super heroes, princesses, cheerleaders and firetrucks! The event takes place in the parking lot in tailgating fashion and the grand finale is walking the concourse around the Arvest Ballpark as one team!





Arkansas State Programs

<https://humanservices.arkansas.gov/about-dhs/dms>

Arkansas Department of Human Services, Division of Medical Services

The state of Arkansas has many benefits available to support families. However navigating these benefits can be challenging. We would encourage you to visit the website listed above to learn more.

TEFRA-Tax Equity & Fiscal Responsibility Act. Is a Medicaid program for children under the age of 19 years old with a disability. Premiums are based on a sliding scale and pick up charges after primary insurance has paid. Very beneficial because most insurances have caps on therapies, such as (PT) physical therapy, (OT) occupational therapy & (SP) speech therapy. Contact information: humanservices.arkansas.gov or Benton & Washington counties-Amanda Bunch 870-423-3351.

Medicaid Waiver-A division of the Medicaid program that allows your loved one to remain living at home or in community with support staff instead of in an institution. FYI: there is a long waiting list and some families have been waiting for years (10+ years). Children's Contact Information: 501-682-2277. Adult Contact Information: 501-683-5687

PASSE-Provider-led Arkansas Shared Savings Entity. When enrolled in TEFRA and Medicaid Waiver you will be assigned PASSE and Optum will come out for an independent assessment and your child will be assigned a care coordinator. The PASSE is responsible for paying the medical claims. Contact Information: www.passe.arkansas.gov

Early intervention (0-3) under Part C of the Individuals with Disabilities Education Act (IDEA) is First Connections. The Department of Human Services, Division of Developmental Disabilities Services is the "lead agency" with administrative oversight. First Connections provides supports and services for families and their children, birth to age three who have special needs. They serve infants and toddlers birth to age three with certain levels of developmental delay or a diagnosed condition likely to result in developmental delay and their families. Participation in early intervention is at no cost to families with an eligible infant or toddler. Early Intervention <https://dhs.arkansas.gov/dds/firstconnectionsweb/#fc-home>

ARHIPP-Arkansas Health Insurance Premium Payment program. A free program offered to those with employer sponsored health plans or COBRA. This program may pay part or all of your insurance premium. Must be enrolled in TEFRA to be eligible. Contact information: Myarhipp.com

US Social Security Office is located 2153 E Joyce Blvd, Fayetteville, AR 72703. Phone 800-772-1213

NWA Programs and Employment for Adults

Start Here to Get Paired with a Service Provider

<https://www.arcareeducation.org/about/arkansas-rehabilitation-services>

ARKANSAS REHABILITATION SERVICES

Arkansas Rehabilitation Services' (ARS) mission is to prepare Arkansans with disabilities to work and lead productive and independent lives.

ARS has 19 field offices across the state serving all 75 counties.

To achieve its mission, Arkansas Rehabilitation Services provides a variety of training and career preparation programs.

Contact ARS at 1-800-330-0632 or 501-296-1600 to find out how we can help you.



<https://www.fccare.org/>

1-800-461-1793

Friendship Community Care

Friendship Community Care is a nonprofit organization serving children and adults in Arkansas with disabilities & complex support needs.

ADULT SERVICES

Supportive Living	Community Experiences	Specialized Medical Supplies
Family Training	Non-medical Transportation	Case Management
Respite	Supportive Employment	Psychology/Therapy Services
Direct Care Supervision	Adaptive Equipment	Nursing Consultation

JOB PATH (SERVICE PROVIDER), PART OF FCC

Job Path is a job placement agency, working specifically with high school students and young adults as they prepare for the workforce. Services available through Job Path include Vocational Counseling, Pre-Employment Classes, Job Placement, On-the-Job Training, Summer Internships for Students, Career Assessment and Planning, Rehab Technology, Benefits Counseling, Transportation – everything needed to ensure long-term success.

NWA Programs and Employment for Adults

<https://supports.org/>

479-927-4100

ARKANSAS SUPPORT NETWORK

Arkansas Support Network provides support and services to individuals and families with children with disabilities. We are a licensed disabilities service provider for all of Arkansas. We work with a wide range of government agencies and departments, nonprofit organizations, health care facilities, education agencies, local schools, foundations, businesses, and individuals to provide the most effective and least restrictive supports for people with disabilities in environments they and their families choose for themselves.



Arkansas Support Network
SINCE 1988

ADULT SERVICES

Community Living Services

Center for Enrichment

Recreation

Family Support Program

Vocational Programs:

Workbridge

Supported Employment

Ticket to Work

School Work Experience Program
(SWEP)

<http://www.ercinc.org/>

479-872-1800



Elizabeth Richardson Center

The Elizabeth Richardson Center (ERC) is the most comprehensive provider of disability services in Northwest Arkansas. We have been serving the needs of individuals with disabilities since 1963.

The Elizabeth Richardson Center provides services to adults ages 18 and over in a wide variety of programs including vocational training, Supported Employment/Job Placement, life skills training, community involvement, residential options and recreational activities.

OPEN AVENUES
CAPABLE PEOPLE · QUALITY WORK

<http://openavenues.org/index.aspx>

479-636-5082

Open Avenues

Open Avenues serves people with disabilities by facilitating personal growth and attainment of vocational goals. They offer vocational training, pre-vocational training focusing on life skills, socialization and self help skills, community employment and transportation.

NWA Programs and Employment for Adults

<http://pathfinderinc.org/>

479-872-1800

Pathfinder

Pathfinder provides an array of services for the disabled. Services are provided for those citizens, of Arkansas, with developmental disabilities. Our objective is for each participant to become a self-supporting, productive member of society.



Adult Developmental Services:

Evaluation, vocational training, professional counseling, work opportunities, habilitation training, protective and socio-legal services.

Behavioral Health

Employment, including Supported Employment

Intermediate Care Facility

Residential Services

Transportation

NWA Special Needs Ministries

DSCNWA is not a religious organization and does not endorse any specific church.



469-219-9870

<https://www.facebook.com/nwaCapernaum/>

Young Life Capernaum is a Young Life ministry for adolescents and young adults with disabilities. We hold bi-weekly clubs which are full of games, songs, and fun! During these clubs, our Capernaum friends also learn about the life changing Gospel of Jesus Christ! We also have many events and campaigners (small groups) throughout the year for our friends to get involved in.

These churches have designated staff for special needs ministries.

Cross Church

New Height Church

Fellowship Bible Church

Christian Life Cathedral
Church

Gracepoint Church

Recreational Activities for People with Disabilities



Special Olympics
Arkansas

<http://www.specialolympicsarkansas.org/>

The mission of Special Olympics Arkansas is to provide year-round sports training and athletic competition in a variety of Olympic-type sports for all children and adults with intellectual disabilities giving them continuing opportunities to develop physical fitness, demonstrate courage, experience joy and participate in a sharing of gifts, skills, and friendship with their families, other Special Olympics athletes, and the community.



CAMPALDERSGATE
COMMON GROUND FOR EXTRAORDINARY PEOPLE

Contact: 501-225-1444; <https://www.campaldersgate.net/>

Scholarships available

Located in Little Rock, AR for ages 6-18. Overnight and day options.

Camp Aldersgate serves children with medical, physical and developmental needs. Camp offers traditional summer camp activities such as campfires and singing, canoeing, fishing, arts and crafts, swimming, and nature hikes as well as adaptable adventures to serve children of all abilities, including an accessible ropes course, carousel, archery range, and a professionally-led SCUBA experience.

Summer Medical Camps: Five summer sessions are dedicated to children with specific medical conditions, including muscular dystrophy, spina bifida, diabetes, heart conditions, arthritis, kidney disorders, cancer, bleeding disorders, and asthma.

Kota Camps: Two summer sessions for campers with various disabilities and non-disabled siblings and friends.

Pediatrics Plus Summer Day Camp: 6-week day camp for children with Autism Spectrum Disorder hosted in partnership with Pediatrics PLUS of Arkansas. Program is currently FREE to children that qualify for therapy services through the EIDT program.

Recreational Activities for People with Disabilities

Contact: (479) 927-4100; <https://supports.org/>

Arkansas Support Network

Kids Club and Transition Program

Kids Club: Kids Club day camp will have a work-based focus designed to encourage 14-15-year-olds to begin thinking about work opportunities and vocational skills as they approach the transition into adulthood. Campers will have the chance to participate in field trips throughout the area.

Transition Program: The Transition Program provides work-based experience for young people 16+ to help focus and hone their skills and interests for future work opportunities. All campers will need a referral to be submitted from Arkansas Rehabilitation.



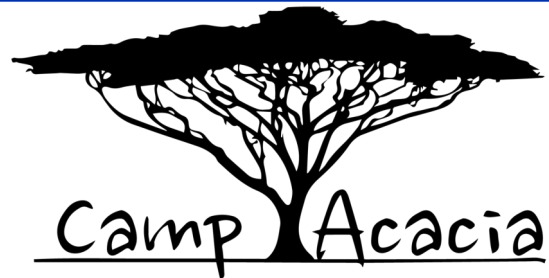
<https://www.championspecialministries.org/campers/summer-day-camps>

We bring Champions Camp to cities across the nation. Our team partners with churches, organizations, and communities to conduct excellent Summer Day Camp programs that minister to individuals with disabilities and their families.



<https://www.campbarnabas.org/>

Camp Barnabas is located in Purdy, MO, where we meet the needs of people with disabilities so they can have an incredible camp experience and learn more about Christ. To make camp possible, we team up with groups and individuals all across the nation to match up each person one-on-one with our campers. Camp is more than an experience. Lives are changed for everyone involved.



<https://campacacia.org/>

Camp Acacia is more than a summer camp. We are an organization on a mission to help families open the world up to their campers and ensure they live big long lives full of meaning and community and fun.

- Therapeutic residential summer camps
- Community-based recreation outings
- Community-based recreational therapy services
- Job training services

Recreational Activities for People with Disabilities

ARKANSAS

<http://ar.missamazing.org/>

MISS *Amazing*

Our goal is to celebrate each and every participant who walks across the stage, and make sure that they leave feeling empowered, confident, and truly AMAZING! More than 2,000 girls and women with disabilities have participated in Miss Amazing programs nationwide.

Event is usually held in February.



MISS - LEZLIE



iNFiniti Athletics

<https://www.infinitiathletics.com/>

Flawless Cheer Team



Kaleidoscope
Dance Academy

<https://www.dancewithkda.com/>

DANCERS WITH HEART IS A **FREE** KALEIDOSCOPE DANCE ACADEMY PROGRAM FOR DANCERS WITH ANY RANGE OF DISABILITIES TO DANCE FROM THEIR HEARTS. KDA'S GOAL IS TO CREATE A ENVIRONMENT WHERE DANCE TEACHERS, DANCERS, THERAPIST AND VOLUNTEERS TEACH MOVEMENT AND DANCE, MAKING ALL PARTICIPANTS ABLE TO SHARE THEIR PASSION. EVERYONE CAN DANCE.



Achilles International is starting a chapter in Northwest Arkansas! Achilles enables people with all types of disabilities to participate in mainstream athletics. Our athletes are paired with volunteers for the weekly workouts.



rEcess is a respite project that provides fun evening programming for children with disabilities and their siblings so that parents can enjoy a few hours of respite. All children with special needs are paired with a 1:1 adult volunteer while their siblings participate in their own specially designed programming. <https://99balloons.org/attend-a-recess/>

Recreational Activities for People with Disabilities



<https://miracleleaguear.com/northwest/>

Welcome to the Miracle League There is nothing like it! When you step into the ballpark, you know that there is something inclusive for everyone, from the barrier free surface made of recycled tires to, thus creating a unique opportunity to challenge, to understand and to correcting misperceptions about individuals with mental and/or physical disabilities. Quickly learning that our players are not much different than yourself they simply go about it differently.



<http://www.horsesforhealingnwa.org/>

Horses for Healing is a nonprofit adaptive / therapeutic horsemanship center in Northwest Arkansas for individuals with special needs, run by a passionate Farm Team and Board of Directors. In addition to private clients, Horses for Healing provides services to area school children and education groups. A Sports Riding Program is also offered to provide inclusive lessons for advanced equestrian training and activities for independent riders that includes group lessons, camps and competitions.

<https://equestrianbridges.org/>

Equestrian Bridges is a registered 501(c) 3 Not for Profit organization dedicated to help Northwest Arkansas children at risk, veterans, individuals and their families. To *empower* these individuals by using Natural Horsemanship in Equine Assisted Activities and Therapies (EAAT).



<https://abilitytree.org/arkansas/>

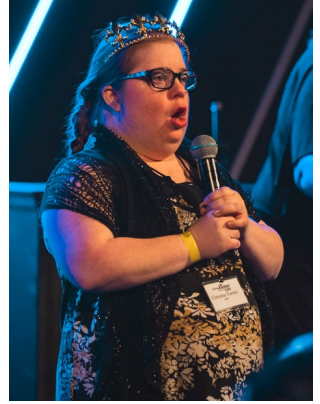
Ability Tree reaches families impacted by disabilities. We partner with individuals and organizations to provide R.E.S.T. RECREATION, EDUCATION, SUPPORT, TRAINING R.E.S.T. is the backbone of how Ability Tree operates and how we want to want to walk alongside your family.

Recreational Activities for People with Disabilities

NIGHT *to Shine*

SPONSORED BY THE **TIM TEBOW**
FOUNDATION™

<https://www.crosschurch.com/nighttoshine/>



Night to Shine is an unforgettable prom night experience, centered on God's love, for people with special needs ages 14 and older. Night to Shine celebrated its sixth anniversary in 2020 and is held annually the Friday before Valentines Day. On one night, 721 churches from around the world came together to host Night to Shine for approximately 115,000 honored guests through the support of 215,000 volunteers! Cross Church in Springdale, AR hosts Night to Shine in NWA.



<https://crystalbridges.org/access-and-inclusive-programs/>

CRYSTAL BRIDGES MUSEUM OF AMERICAN ART

Family Access Night Family Access Night is a fun night out for families with children of all abilities to visit the museum. Youth with disabilities and their families participate in engaging activities including gallery tours, studio art activities, and performances by local entertainers. The event is free, and pre-registration is encouraged.



Play with Passion is a program organized through the Bentonville Schools. Once a month, the program visits a different site to promote activities for youth with disabilities. Crystal Bridges partners with Play with Passion to offer fun outdoor art and activity stations inspired by nature.

EASTER

Ability Friendly Egg Hunts

Hope Church in Bentonville

First Church in Springdale

Yvonne Richardson's Center



Scott Family Amazeum in Bentonville hosts their annual HallowZing event for kid's with special needs and their families.

The Embassy Suite's in Rogers hosts Trick or Suite an indoor event for kid's with special needs and their families.

Facebook Groups in NWA



**Down Syndrome
Connection**
OF NORTHWEST ARKANSAS

Down Syndrome Con-
nection of NWA
Group Page for our
members.
Request to Join.



Mom 2 Mom is a non-denominational,
faith based support group for mothers
of special need's children of any age.

BeSEEN: Bentonville Special Education Equality Network

Our Mission is to facilitate participation within our
schools and community by promoting an increased
awareness and opportunities for children with special needs.

Our Vision is a community of acceptance with an
abundance of opportunities for children with
special needs and their families.



National Organizations



<https://www.ndss.org/>



**NATIONAL
DOWN SYNDROME
CONGRESS**

<https://www.ndsccenter.org/>



<https://www.nads.org/>

Supplies



Arkansas Medical Supply
Part of ABC Medical

(866)-897-8588

<https://www.abc-med.com/>



ABC Medical is a national provider of urology, ostomy, incontinence and wound care products. If you or someone you know is involved in adaptive sports, it is likely you recognize ABC Medical as they are the biggest supporter of adaptive sports in the United States, proving their dedication to their customers' health and wellness.



(501)-753-3330

ABC

Infant Formulas, Inc.

Leading provider for nutritional supplements, food thickeners, and incontinence products for Medicaid patients in Arkansas since



TOTAL
MEDICAL SUPPLY

(877) 670-1120

info@tmscares.com

TMS specializes in providing medical supplies to kids with special needs throughout Arkansas & Texas. Incontinence Supplies (AR Medicaid AGE 3-LIFE) (TX MEDICAID AGE 4-LIFE), Nutritional Supplements (AR & TX AGE 5-20), Thickeners (AR & TX BIRTH-LIFE).

Local Organizations Serving People with Disabilities of All Ages



<https://www.fccare.org/>



<http://www.ercinc.org/>



Arkansas Support Network
SINCE 1988

<https://supports.org/>



<http://pathfinderinc.org/>

NWA Therapy Clinics

DSCNWA does not endorse any specific therapy provider. List is not comprehensive.

Clinic Name	City
Absolute Pediatrics (PT, OT, ST, DT, Psych and Mental Health).	Bentonville
Children's Therapy TEAM (PT/OT/ST/DT)	Bentonville, Fayetteville, Siloam Springs
Mercy Therapy Services - Highway 102	Bentonville
No Limits Pediatric Therapies	Bentonville
Horses For Healing	Bentonville
Imagine Pediatric Therapy Inc (PT/OT/ST)	Centerton
Thera Play Pediatrics (PT/OT/ST)	Fayetteville
Cross Therapy Services (PT/OT/ST)	Fayetteville
Northwest Pediatric Therapy Services (ST, OT Only)	Fayetteville
All Aboard Pediatric Therapy (PT/OT/ST)	Rogers
Kids for the Future (PT/OT/ST)	Rogers
Post 0218 Pediatric Therapy (PT/OT/ST)	Rogers
Playstrong Pediatric Therapy	Rogers
Friendship Pediatric Services Of NWA (PT/OT/ST)	Siloam Springs
Holly Street Physical Therapy (PT/OT)	Siloam Springs
All Aboard Pediatric Therapy (PT/OT/ST)	Springdale
Jarvis Pediatric Therapy, Inc. (PT/OT/SP)	Springdale
Cassady Children's Center (ST, OT & PT)	Springdale
The Therapy Spot (PT/OT/ST)	Springdale
Kids Spot (PT/OT/ST)	Springdale
Physicians Therapy Group (PT/OT/ST)	Springdale
Friendship Pediatric Services	West work

Welcome

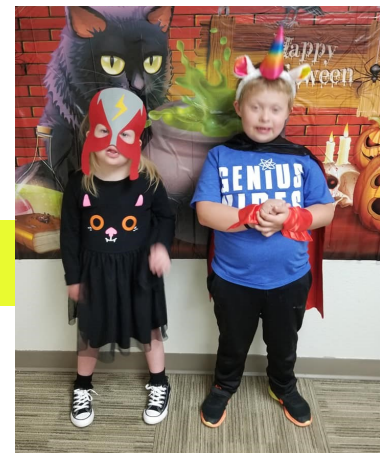


**Down Syndrome
Connection**
OF NORTHWEST ARKANSAS

We look forward to you being a part of the DSCNWA family! We hope that the information provided will help you get settled in and plugged in to the NWA community. We are here to help in anyway we can!



Welcome to the DSCNWA Family!



DOWN SYNDROME CONNECTION OF NWA
www.dscnwa.com | 479-282-3639
1200 W. Walnut St., Suite 1407, Rogers, AR